

Capability Statement

2023

Total capability in infrastructure

CONTENTS

- [4 KEY INFORMATION](#)
- [5 KYPREOS GROUP STRUCTURE](#)
- [6 OUR VALUES](#)
- [9 STATE ASPHALT SERVICES](#)
- [11 STATE ASPHALTS](#)
- [12 SYDNEY ROAD PROFILING](#)
- [13 NACE](#)
- [15 KYPTER](#)
- [16 ATLAS](#)
- [17 CONTACT](#)





┌ An Australian leader
in civil engineering,
road and infrastructure
projects. └

KEY INFORMATION

Founded by George Kypreos in 1970, the Kypreos Group is built on the principles of honesty, quality of workmanship and commitment to clients.

Preserving the original values established in 1970, the Kypreos Group is committed to both its clients and staff.

Through a customer-led approach, the Kypreos Group ensures that clients achieve innovative solutions to their engineering problems that are delivered within budget and on time.

This dedication has seen the Kypreos Group develop long term relationships with high profile clients in a number of industries.

The Kypreos Group has grown to employ more than 300 employees across the group with an annual group turnover in excess of \$275M.

They Kypreos Group incorporates vertically-integrated and largely self-performing companies, which can focus on managing and delivering the project to the highest safety and quality standards, within budget and on time.

TOTAL CAPABILITY IN CONSTRUCTION - SELF-PERFORMING, VERTICALLY INTEGRATED

Our company is a part of the Kypreos Group. By managing the internal supply chain through this vertically-integrated business model, we minimise delays, maximise value, and improve control and quality, while delivering effective long-term outcomes by passing these benefits onto our customers.

Having evolved from a civil engineering foundation, our mission is to provide innovative, flexible solutions and total capability in all of our ventures.

This is supported by the group's ability to offer a range of services with the ability to deliver end-to-end engineering solutions. The Kypreos Group can cater for all civil engineering and roads projects with total in-house solutions.



Kypreos Group

State Asphalt Services	State Asphalts	Nace Civil Engineering	Kypter	Sydney Road Profiling	Atlas Traffic Management
<p>Laying, Restoration, Spray Sealing</p> <ul style="list-style-type: none"> - Asphalt laying - Spray sealing - Road Restoration Services 	<p>Supply and Delivery Civil works of Asphalt</p> <ul style="list-style-type: none"> - Supply and Delivery of Asphalt - Design mixes - Laboratory testing and reporting to NATA requirements - Research and Development - Recycling materials for asphalt production 	<p>Civil Works</p> <ul style="list-style-type: none"> - Civil construction and maintenance - Airside and non-airside works - Utility Installation - Road and Bridge Construction - Earthworks and Drainage - Design and Construct Services - Asphalt production and placement - Concrete Pavement Construction - Demolition and Remediation - Concrete paving 	<p>Plant, Equipment & Hauling</p> <p>Plant and Equipment:</p> <ul style="list-style-type: none"> - Excavators - Haulage - Sweepers - Dozers - Scrapers - Mobile Concrete - Plant - Mobile Asphalt Plant - Concrete Paver - Profilers - Float Truck - Graders -Loaders 	<p>Milling</p> <ul style="list-style-type: none"> - Road Profiling Services 	<p>Traffic Control</p> <ul style="list-style-type: none"> - Traffic Planning and Management - Traffic Control

We value sustainability,
people, culture and safety

OUR VALUES

The Kypreos Group is underpinned by the experience, skills, initiative and commitment of our people.

Built on a foundation of honesty, collaboration and a shared goal of excellence, the Kypreos Group continues to encourage excellence for clients and a respect for the environment.

OUR SAFETY

People are the foundation of the Kypreos Group of Companies. Safety is Number One. Through group wide policy, the Kypreos Group of Companies are committed to ensuring safe workplaces.

Constant monitoring and assessment of the safety and health of all employees and projects is engrained in the everyday

processes and activity. The Kypreos Group of Companies provides a positive safety culture throughout its business.

For this reason, the Kypreos Group of Companies strives to provide a supportive safety culture though visible, consultative and accountable leadership. People are the foundation of the Kypreos Group of Companies. Safety is Number One.

Through group wide policy, the Kypreos Group of Companies are committed to ensuring safe workplaces. Constant monitoring and assessment of the safety and health of all employees and projects is engrained in the everyday processes and activity.

The Kypreos Group of Companies provides a positive safety culture throughout its business. For this reason, the Kypreos Group of Companies strives to provide a supportive safety culture though visible, consultative and accountable leadership.



Accountability. Integrity.
Respect. (AIR)
Underpins our culture, and
commitment to the clients
and communities we serve.



ENVIRONMENT

The Kypreos Group of Companies is committed to managing its environmental footprint through the principles of ecological sustainable, policy improvement and pollution prevention on all its current and future processes and activities.

By striving to balance the economic and operational requirements with social responsibilities, we aim to minimise the impact on the environment and surrounding communities.

This approach calls for innovative solutions; promoting environmental sustainability in every aspect of the business. We aspire to be leaders in the industry; to only achieving compliance, but also hanging the business operation environment through education and support of environmental sustainability.

QUALITY

The Kypreos Group of Companies believes in providing quality products and services within time and budget, maintaining the highest level of customer satisfaction in order to preserve its future business. By applying this principal we maintain client satisfaction and expectations at all times and we develop

the skills of our people to meet the needs of the changing environment. It prides itself in providing a quality product and service and has earned a reputation as the “Contractor of Choice” for many of its clients.

PEOPLE

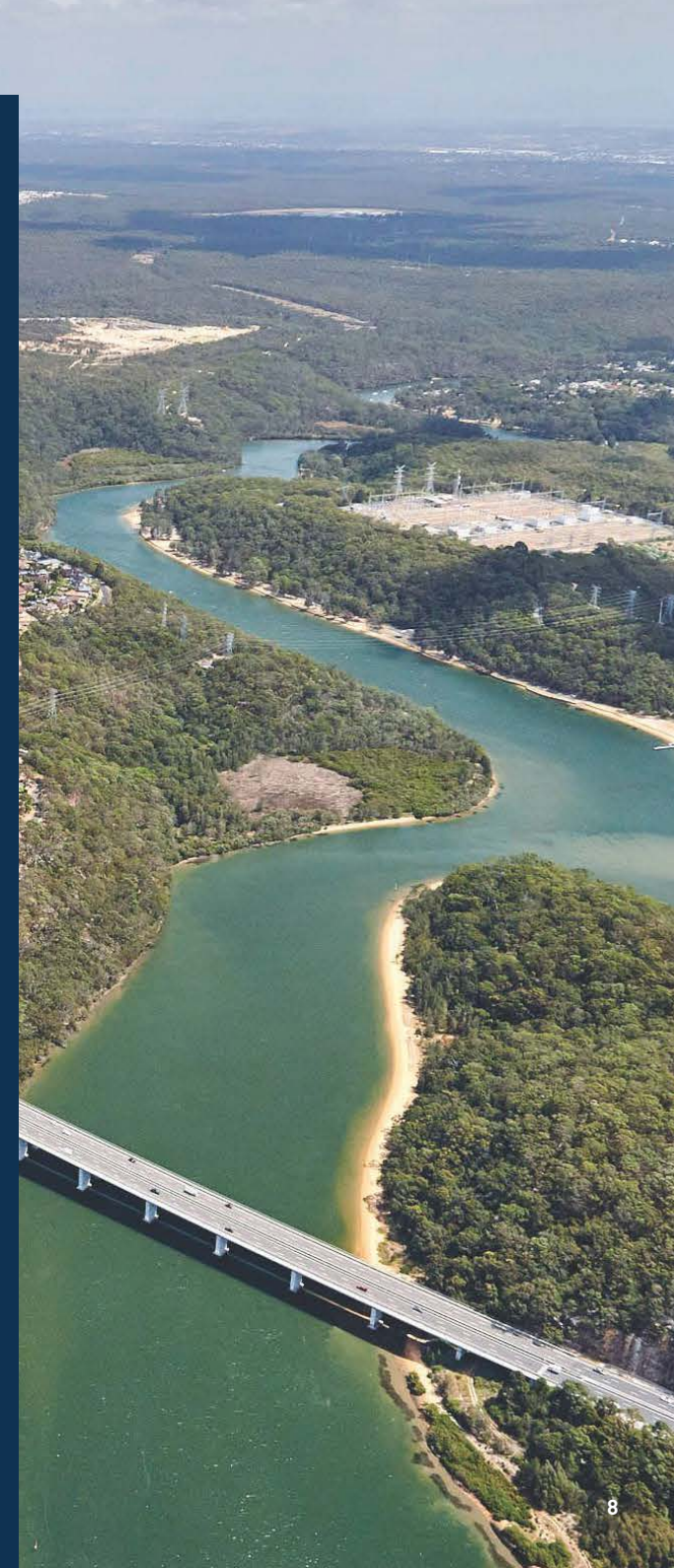
The Kypreos Group has built its reputation through its selection of people. We have an unprecedented retention rate with relation to the industry.

The key factor in our success is treating our people, clients and members of public with respect and honesty. It strives to be an employer of choice and encourage personal development and a culture of aspiration.

LEADERSHIP

The strong and experienced senior management team empower the employees by living the daily values of the Kypreos Group, creating a trusting environment.

It ensures that all of our people lead with respect, professionalism, integrity, fairness and accountability and visible, consultative and accountable leadership.





State Asphalt Services

SPECIALISATION

State Asphalt Services is a specialised asphalt placement business incorporated in 2000 to complement both State Asphalt and Nace Civil Engineering.

Combining the vision to exceed quality expectations, State Asphalt Services have raised the bar in asphalt placement and are highly regarded by leading professional organisations and government departments. In 2010, a Spray Sealing division was added.

We have the capability to execute projects of all sizes including: Roads, Bridges, Airfields. Services we offer include: Asphalt, Paving, Profiling, Transport/Cartage.

PREQUALIFICATIONS

Since 2001, State Asphalt Services has grown to hold a market share of approximately 25% of the Sydney Basin. 70% of State Asphalt Services business is derived from Government organisations.

We currently hold RMS prequalification status for the following: Asphalt A2, Financial F10, OFSC, AS/NZS 4801-2001 OHSMS.



Project (Asphalt)	Client	Value (\$m)
Alfords Point Road Upgrade	Nace	4
M4 Widening	RCPBJV	22
Light Rail	ACC	10
Western Region Upgrade Works	RMS	7
M1 Pacific Hwy & Central Coast Upgrade	WSROC	16
Upgrade & Maintenance	BCC	20
M1 Tuggerah to Doyalson	CPB	40
Bankstown Airport Runway Upgrade	SMA	1
M5 Widening Upgrade	RMS	50
Road Maintenance	CCC	3
Panel Maintenance	RMS	16
Great Western Hwy Upgrade	McMAHON	5
North West Transit Way	CPB	17
M1 Southern Upgrade	RMS	50
Westlink M7	ALJV	30
Princes Hwy Upgrade - Nowra	RMS	10
Roads Program	CCC	2
RMS & Local Roads	HCC	3
RMS Maintenance Panel	RMS	3
Western Sydney	WSROC	4
Tenderfield Shire Council Roads Program	TSC	5
New England Councils spray Sealing	Reg Pro	3
Clarence Valley Spray Sealing	CVSC	4

SPECIALISATION

We focus on providing customers with best quality, service and solutions at all times. Products are supplied to residential, commercial and government organisations as well as the Groups own projects.

State Asphalts operates 24/7 with a customer focused roduction at the core of its asphalt manufacturing. Beyond our production capabilities, we are a market leader in asphalt recycling technologies, utilising inhouse facilities to minimise environmental impact. We have our own onsite NATA accredited testing facilities.

Our commitment to proactively maintaining our plant ensures that we are always ready for operation. Supported by clever and innovative

technical engineers, we understand our Clients technical needs products to conform to any specification and requirements. This allows us to be at the forefront of our industry and responsive to changing market demands.

CAPABILITIES

We have the capability to: Manufacture Asphalt, Design Asphalt Mixes, NATA Testing Facilities, Recycling Reclaimed Asphalt (RAP), Production of Warm Asphalt.

We supply: Sydney Metro, NSW South Coast (Prestons, St Marys), Large and Regional Projects through out portable plants.

Plant Locations: Prestons, St Mary's, South Nowra, Kulnura and mobile plant.



Sydney Road Profiling

SPECIALISATION

Sydney Road Profiling was established in 2007 and uses a fleet of industry leading equipment. It's sole purpose was to complement State Asphalt Services. However with the continued best industry practises, the company has grown to service not only State Asphalt Services, but both private and government industry sectors.

We offer a competitive edge in road construction and maintenance works incorporating the latest technology in automated levelling systems such as 3D cutting and sonic averaging systems.

We have the capability for: Asphalt Profiling, Concrete Profiling, Auto - Levelling Systems, Fine Drum Milling, Earthworks Boxing, Cartage and Disposal of Reclaimed Asphalt Pavement.

With versatility and the ability to provide the correct machine for the task, we were responsible for the road profiling of the Sydney Harbour Bridge in 2012. With structural and environmental factors to consider, combined with strict timeframes, we found an innovative solution allowing the project to exceed expectations and completing well before the deadline.



Pioneer of concrete paving
and leading professionals.

SPECIALISATION

Nace Civil Engineering was a pioneer to the slipform concrete paving, a solution complimented by the business to undertake a wide range of civil infrastructure projects.

Our quality of work is highly regarded by leading professional organisations and has allowed us to be involved in the construction of all major motorways in and around Sydney and throughout NSW, including the M5 Motorway, Camden Valley Way, Princess Highway, Central Coast Highway and MR92.

We have also been involved in a number of specialised projects such as the redevelopment of Hyde Park, pedestrian and vehicle tunnels at Rose Hill Race Course and the rebuilding of the jetty and sandstone walls and security elements of Admiralty House.

We have the capability to execute projects of all sizes: Roads, Bridges, Railways, Airports and Airfields, Marine Works, Sub-divisions, Bulk and Detailed Earthworks, Buildings and Structures.

As a company belonging to a group of vertically integrated companies, we have developed into a largely self-performing company.

We can focus on managing and delivering projects to the highest safety and quality standards, within budget and on time, while managing specialised subcontractors.

Project delivery is underpinned by the implementation of the companies Integrated Management System.

We currently hold status for the following: RMS prequalification for Transport NSW.

Project	Client	Value (\$m)
Alfords Point Road Upgrade	RMS	24
Camden Valley Way - Stage 1 & 2	RMS	110
Central Coast Hwy	RMS	37
Bernera Road Reconstruction & Widening	LCC	9
Princes Hwy Duplication South Nowra	RMS	38
North Eveleigh Affordable Housing - Civil & Remediation	SMDA	7
Erskine Park Link Road	RMS	31
Mamre Road & Erskine Park Road Intersection Upgrade	RMS	5
Wyong Road Interchange	RMS	10
F5 Widening	CCC	120
Macarthur Commuter Carpark	TFNSW	4
Warringah Bus Layover	RMS	20
Bangor Bypass	RMS	20
Tianjara to Billy's Hill	RMS	25
Pacific Upgrade Tuggerah - Stage 2	RMS	15
Bulee to Nerriga	RMS	29
ATP Seven	SBP	16
Prince Henry Little Bay Civil Works - Stage 2	Landcom	65
A380 New Large Aircraft Civil Works	SACL	30
HMAS Albatross Stage 1 & 2 Nowra	LL	18
Maintenance Apron Sydney Airport	SACL	5
South East Trunk Drainage Sydney Airport	SACL	5
Taxiway Enhancements Sydney Airport	LL	55
Western Apron Works Sydney Airport	LL	18



SPECIALISATION

Kypster was established in 2000 to complement the requirement of the Kypreos Group of Companies.

It quickly became apparent that with the requirements, it became a must to control the end to end process to ensure that our Clients were not let down.

We possess a total capability in haulage and earth moving equipment. Our focus is to ensure that we have an elite set of assets that uphold the core values of the Group.

We have the capability for: Plant Hire, Haulage of Quarry, Products, Transport of plant and Equipment, Steel Fabrication, Mobile Concrete Batch, Plant, Concrete Slip form Paver, Fine Crushed Rock Paver.

Our fleet consists of: Scrapers, Dozers, Excavators, Graders, Compactors & Rollers, Road Trucks of various configuration.



SPECIALISATION

Atlas Traffic Management is the newest addition to the Kypreos Group of Companies. Being formed in 2016, its predominant function was to supplement the Kypreos Group of Companies, namely State Asphalt Services.

Underpinned by the fundamental mantra of providing the safest possible environment for our staff, Clients and the general public.

With its modern and reliable fleet, it has become a leading provider of traffic management services in Eastern NSW. Whether working for the group, or external Clients, we believe that detailed planning, preparation and implementation is the best strategy to positive outcomes.

Our experienced staff have the capability for: Traffic Management Planning, Traffic Control, Traffic Counting, Traffic Equipment Hire, Risk Management.



Project	Client
Cumberland Council Area	State Asphalt Services
Canterbury Bankstown Council	State Asphalt Services
Liverpool City Council	State Asphalt Services
Penrith Council	State Asphalt Services
Sutherland to Cronulla Run	Wanda SLSC
City to Surf	Who Dares
Nepean Triathlon	Nepean Triathlon Inc

MEMBERS & AFFILIATIONS

OUR PARTNERS

As leaders in the civil engineering industry, the Kypreos group of companies is proud to be supported by the following organisations:



CONTACT

If you have any questions for The Kypreos Group or are interested in speaking to the team, please don't hesitate to give us a call or send us an email.

P: (02) 9607 1988

F: (02) 9607 1999

E: frontdesk@kypreos.com.au

90 Jedda Road, Prestons NSW 2170

P.O. Box 598, Hoxton Park NSW 2171